



THCS Learning Week

” Supporting the transfer and implementation of health and social care solutions in Europe. ”

29 September 2025

Funded by the European Union under the Horizon Europe Framework Programme - Grant Agreement N°: 101095654. Views and opinions expressed are however those of the author(s) only and do not necessarily reflect those of the European Union or European Health and Digital Executive Agency (HADEA). Neither the European Union nor the granting authority can be held responsible for them.



Co-funded by the
European Union



Introduction to THCS project

Funded by the European Union under the Horizon Europe Framework Programme - Grant Agreement N°: 101095654. Views and opinions expressed are however those of the author(s) only and do not necessarily reflect those of the European Union or European Health and Digital Executive Agency (HADEA). Neither the European Union nor the granting authority can be held responsible for them.



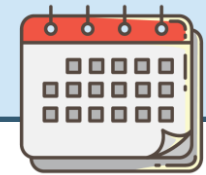
Co-funded by the
European Union



- One of the Partnerships under Horizon Europe (Pillar 2 - Global Challenges & European Industrial Competitiveness)
- Total budget of appr. € 305 million and an EC Contribution of € 91 million (30% of the total budget)



- **64 partners**
- **23 Member States and HE Associated Countries**
- **9 regions**



Start: January 2023
Duration: 7 years

THCS Partnership

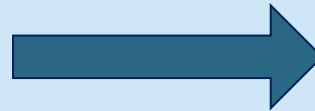


Co-funded by the
European Union

Funded by the European Union under the Horizon Europe Framework Programme - Grant Agreement N°: 101095654. Views and opinions expressed are however those of the author(s) only and do not necessarily reflect those of the European Union or European Health and Digital Executive Agency (HADEA). Neither the European Union nor the granting authority can be held responsible for them.

THCS Vision and Objectives

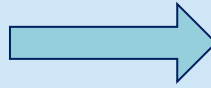
**High-quality, fairly
accessible, sustainable,
efficient, resilient and
inclusive health and care
systems for all**



- **Increase funding opportunities and strengthen the research and innovation community**
- **Fill the knowledge gap**
- **Increase the ability to implement innovation**
- **Intensify cooperation among countries and beyond healthcare**
- **Increase stakeholders' involvement**



Three main workstreams



Fill the knowledge gaps

Implementation and Transfer

Boosting Health and care systems

THCS Approach

Problem and priorities definition

Learn from practices

learning what, why and how

People-centred health and care systems

Implementation and Transfer

Boost health systems

PILLAR 1

Science & Innovation into
Policy and Practice

WP4 – Methodological and Assessment Framework

WP5 – Bridging evidence to policy

PILLAR 2

Research and Innovation
funding

WP6 – Calls texts definition of R&I topics

WP7 – Joint Transnational Calls Secretariat

WP8 – Project Monitoring and Assessment of
Projects' results and impacts

PILLAR 3

Support transferability &
strengthening ecosystems

WP9 -Strengthening ecosystems

WP10 –Knowledge hub to support the
transferability of good practices

PILLAR 0

Programme management

WP1 – Governance and Annual Work Plan

WP2 – Coordination and Management

WP3 – Strategic relationship and Impact
maximisation



The webinar recording and presentations can be accessed via THCS Knowledge Hub:

<https://knowledgehub.thcspartnership.eu/login>



Date	Time (CET)	Title of the session	Registration link
Tuesday 30 Sept 2025	13.00 - 14.00	“Healthcare of the Future – Insights from the THCS Funded Projects”	
Tuesday 30 Sept 2025	15.00 - 16.00	“Reducing Low-Value Care: Practical Strategies for Improving Quality and Efficiency”	
Wednesday 1 October 2025	11.00 - 12.00	“Healthcare of the Future – Insights from the THCS Funded Projects”	
Wednesday 1 October 2025	15.00 - 16.00	“Innovate to prevent – Insights from the THCS Funded Projects”	
Thursday 2 October 2025	11.00 - 12.00	"Capacity-building Capacity building to strengthen R&I for the transformation of health and care systems"	
Thursday 2 October 2025	13.00 - 14.00	“Future skills in healthcare: Training That Transforms”	
Friday 3 October 2025	13.00 - 14.00	“Building decision makers capacity and knowledge on evidence-based strategies in policymaking”	





TRANSFORMING HEALTH
AND CARE SYSTEMS

THCS supports the transfer and implementation of health and care solutions across systems

THCS tools in the HUB

Heidi Muurinen

Finnish Institute for Health and Welfare

Funded by the European Union under the Horizon Europe Framework Programme - Grant Agreement N°: 101095654. Views and opinions expressed are however those of the author(s) only and do not necessarily reflect those of the European Union or European Health and Digital Executive Agency (HADEA). Neither the European Union nor the granting authority can be held responsible for them.



Co-funded by the
European Union

THCS has designing three tools

- THCS has three tools (PDFs)
 - THCS Transferability Analysis Tool
 - THCS Feasibility Analysis Tool
 - THCS Checklist for Preparing an Implementation Plan
 - + Description of the solution in the HUB
- The tools have been designed iteratively based existing tools and THCS activities:
 - a scoping review (2024),
 - testing and comments by THCS learning network (2024) and
 - updated version of the THCS Framework (2025)



Developing the THCS Transferability Analysis Tool

- **Transfer** refers to the entire process of transferring a successful solution from its primary context to a target context (Segard et al. 2024).
- **Transferability** analysis focuses on analyzing whether the outcomes of a successful solution are achievable in another context (Schloemer et al. 2021; Cambon et al. 2012; Wang et al. 2006).
 - Before making the transfer decision, the focus of transferability analysis is on anticipated transferability.
 - After the solution is transferred, the focus shifts on how the outcomes were achieved and whether the context changed them.



Read more!

THCS tool has been designed based on:

- ASTAIRE: Assessment of transferability and adaptation of health promotion interventions (Cambon et al. 2013).
- The conceptual Population–Intervention–Environment–Transfer Model of Transferability (PIET-T) (Schloemer et al. 2021).
- Guidebook on Best Practices in Public Health (OECD 2022).



THCS Transferability Analysis Tool

- The THCS transferability analysis tool is used for assessing the anticipated transferability.
- The tool is thematized into four categories (PIET-T Model):
 - 1) **Solution** – Assess the clarity and quality of the description of the solution
 - 2) **Population** – Compare the population / target group of the solution to your population / target group and assess if the differences would affect achieving the outcomes
 - 3) **Environment** – Compare the key environmental requirements of the solution to your context and assess if the differences would affect achieving the outcomes
 - 4) **Transfer** – Assess the support for transfer and implementation
- Each theme includes sub-questions (total 15) with options on YES – NO/PARTLY – NOT APPLICABLE
- The sub-questions in each theme are followed by an open field to elaborate on potential adaptations to the solution and / or to the context or describe implementation strategies that would help overcoming other identified obstacles.
 - The tool supports reflection and discussion but does not provide direct answer or score on the transferability of the solution.



THCS Transferability Analysis tool can be downloaded from the HUB as a fillable pdf

1. Solution content – assess the clarity and quality of the description of the solution

Sub-questions	Yes	No/Partly
Is the solution sufficiently and clearly described to make decision of its transferability?	<input type="checkbox"/>	<input type="checkbox"/>
Is the primary evidence on the outcomes of the solution useful and good quality?	<input type="checkbox"/>	<input type="checkbox"/>
If No/Partly, can you obtain more information of the solution? If yes, describe here what concerns you had and what information you received to perform the transferability analysis.		

3. Environment – compare the key environmental requirements of the solution to your context and assess if the differences would affect achieving the outcomes

Sub-questions	Yes	No/Partly	Not applicable
Does your health and care delivery and financing model allow implementing the solution and enable achieving the outcomes?	<input type="checkbox"/>	<input type="checkbox"/>	<input type="checkbox"/>
Does your health and care policies and regulations allow implementing the solution and enable achieving the outcomes?	<input type="checkbox"/>	<input type="checkbox"/>	<input type="checkbox"/>
Do you have necessary information system (data exchange, privacy standards and integration with the solution) available and does it enable achieving the outcomes?	<input type="checkbox"/>	<input type="checkbox"/>	<input type="checkbox"/>
Do you have necessary health and care facilities and equipment available, and do they enable achieving the outcomes?	<input type="checkbox"/>	<input type="checkbox"/>	<input type="checkbox"/>
Would the solution be acceptable among your health and care providers, administrators, and other stakeholders and does this enable achieving the outcomes?	<input type="checkbox"/>	<input type="checkbox"/>	<input type="checkbox"/>
Would the solution be acceptable within your political system structure and climate and does this enable achieving the outcomes?	<input type="checkbox"/>	<input type="checkbox"/>	<input type="checkbox"/>
Are other elements in your context supportive for implementing the solution and enable achieving the outcomes? (e.g., no competing/antagonist initiatives)?	<input type="checkbox"/>	<input type="checkbox"/>	<input type="checkbox"/>
If No/Partly, can adaptations be made by keeping the original core elements or can other context-related barriers be resolved? How?			

Developing the THCS Feasibility Analysis Tool

- **Feasibility** means the extent to which a solution can be successfully used or carried out within a given agency or setting (Karsh 2004; Proctor et al. 2011).
- **Applicability** is a synonym to feasibility, and it focuses on whether the solution/practice could be implemented in the local setting, no matter what the outcome is (Wang et al. 2006)



Read more!

THCS tool has been designed based on:

- Structured Assessment of FEasibility (SAFE) (Bird et al. 2014) and
- few questions were formulated based on key aspects presented in literature (Horner et al. 2014; Seilo et al. 2024).



THCS Feasibility Analysis

- THCS feasibility analysis tool focuses on whether a solution can be successfully implemented and is applicable within a specific setting.
- The feasibility analysis can be performed before, during, and after the testing / piloting of a solution.
- The tool includes eight aspects.
- Each aspect includes sub-questions (total 22) followed by open fields to provide space to elaborate on potential adaptations to the solution and / or to the context or describe implementation strategies that would help overcoming other identified obstacles.
 - The tool supports reflection and discussion but does not provide direct answer or score on the transferability of the solution.



THCS Feasibility Analysis tool can be downloaded from the HUB as a fillable pdf

1. Assess the quality of the care and/or medical/clinical soundness related on the solution.

Sub-questions	Yes	No/Partly	Not applicable
Is the solution medically/clinically sound?	<input type="checkbox"/>	<input type="checkbox"/>	<input type="checkbox"/>
Does the solution align with the necessary quality of care in your organisation?	<input type="checkbox"/>	<input type="checkbox"/>	<input type="checkbox"/>
Do the expected outcomes of the solution match the prioritised goals of the organisation?	<input type="checkbox"/>	<input type="checkbox"/>	<input type="checkbox"/>
Can the solution be effectively managed within the clinical setting?	<input type="checkbox"/>	<input type="checkbox"/>	<input type="checkbox"/>
Are the core features and content of the solution and the needed context well defined?	<input type="checkbox"/>	<input type="checkbox"/>	<input type="checkbox"/>
If No/Partly, can adaptations be made by keeping the original core elements and/or can other barriers be resolved? How?			

Kysymys 1 selitys

5. Assess the risks related on the solution.

Sub-questions	Yes	No/Partly	Not applicable
Is the solution risk-free (including financial, operational, clinical, and legal risks)?	<input type="checkbox"/>	<input type="checkbox"/>	<input type="checkbox"/>
Does the solution take account environmental impacts and is it eco-friendly?	<input type="checkbox"/>	<input type="checkbox"/>	<input type="checkbox"/>
Is the solution non-discriminatory and enhances equality?	<input type="checkbox"/>	<input type="checkbox"/>	<input type="checkbox"/>
Can the solution be piloted?	<input type="checkbox"/>	<input type="checkbox"/>	<input type="checkbox"/>
Is the solution reversible and/or can it be de-implemented?	<input type="checkbox"/>	<input type="checkbox"/>	<input type="checkbox"/>
If No/Partly, can adaptations be made by keeping the original core elements and/or can other barriers be resolved? How?			

THCS Checklist for Preparing an Implementation Plan

- THCS Checklist helps to consider the key components that should be included in an implementation plan when implementing a solution developed elsewhere.
- The relevance of the components depends a lot on what kind of solution you are going to implement and what the implementation context is.
- The plan should be updated it throughout the process when needed.
- For the checklist, the components have been organized around four themes:
 - Solution
 - Implementation process
 - Barriers, risks and legal considerations
 - Capacity building and leadership
 - Communication and commitments



THCS Checklist for Preparing an Implementation Plan can be downloaded from the HUB as PDF

Solution

- **Background and Context:** Explain the background and context that necessitates the implementation of the solution, including any relevant problems, challenges, and needs
- **Description of the solution:** Attach the description of the solution you have created during the process to the implementation plan. It should describe how the solution is being performed in the organisation and in its settings.
- **Documentation on made modifications and adaptations.** Report during the implementation process what modifications or adaptations were made, including: 1) when, how and by whom modification was made, was it planned/unplanned, what was modified and at what level of delivery, how consistent it is with fidelity and reasons for making modification (the goals and/or influencing context-factors).

Implementation process

- **Implementation Goals:** Clearly state 1) the goals for the phases of the implementation process and 2) the outcome goals you defined in the beginning of the transfer and implementation activity which the implementation of the solution aims to achieve.
- **Scope and Timeline:** Define the scope of the implementation, specifying what will be included and what will not. Create a detailed timeline with milestones and deadlines.
- **Stakeholder Analysis:** Identify all the stakeholders to be involved in the implementation, both internal and external, and describe their roles and responsibilities.
- **Resource Allocation:** Outline the necessary resources for the implementation, including personnel, budget, technology, equipment, and any external support.
- **Sustainability Plan:** Describe how the solution will be sustained and maintained in the long term, including ongoing support and updates.

- **Monitoring and Evaluation:** Define the metrics and indicators that will be used to measure the success of the implementation process and describe the monitoring and evaluation process. Define who is the owner of the process and are responsible for following how the implementation proceeds and updating the implementation plan throughout the process. Name the members of the implementation team.

Barriers, risks and legal considerations

- **Barriers and Facilitators:** Assess what the barriers and facilitators are for the implementation.
- **Risk Assessment and Mitigation:** Identify potential risks and challenges that may arise during the implementation process and develop strategies to mitigate or address them.
- **Legal and Compliance Considerations:** Address any legal and regulatory requirements that must be met during implementation and describe how compliance will be ensured.

Capacity building and leadership

- **Training and Education:** Detail the training and education requirements for the individuals involved in the implementation, including staff, end-users, and any necessary training programs.
- **Change Management:** Discuss strategies for managing and addressing resistance to change among employees or stakeholders affected by the implementation.

Communication and commitments

- **Communication Plan:** Describe how dialogue, collaborative learning, and communication will be managed throughout the implementation, including how progress will be reported, who the key communicators are, and what channels will be used.
- **Approval and Sign-off:** Include a section for obtaining approvals and sign-off from relevant stakeholders, confirming their commitment to the implementation plan.



References

- Bird et al. (2014) Evaluating the feasibility of complex interventions in mental health services: standardised measure and reporting guidelines, *British Journal of Psychiatry*, 204, 316-321.
- Cambon et al. (2013) A tool to analyze the transferability of health promotion interventions. *BMC Public Health* 16(13). doi: 10.1186/1471-2458-13-1184.
- Horner et al. (2014). The importance of contextual fit when implementing evidence-based interventions. U.S. Department of Health and Human Services.
- Koivisto, J (2025) THCS Transferability and Implementation Framework A methodological framework for supporting the transfer and implementation of practices across the health and care systems.
- OECD (2022) Guidebook on Best Practices in Public Health. OECD Publishing, Paris, <https://doi.org/10.1787/4f4913dd-en>.
- Segard et al. (2024) Framework to Support the Transfer of Innovative Interventions in the Disability Field: Lessons from the Transferability of Complex Interventions in Public Health: A Review. *Disabilities* 4(3), 724-740; <https://doi.org/10.3390/disabilities4030044>
- Seilo et al. (2024). Psykososiaalisen intervention adaptointi - kuvaus keskeisistä näkökulmista ja käsitteistä. *Kasvun tuki -aikakauslehti*, 4(1). <https://doi.org/10.61259/kt.144999>
- Schloemer et al. (2021) Implementation of evidence-based health promotion and disease prevention interventions: theoretical and practical implications of the concept of transferability for decision-making and the transfer process. *Bundesgesundheitsbl* 64, 534–543. <https://doi.org/10.1007/s00103-021-03324-x>
- Wang et al. (2006) Applicability and transferability of interventions in evidence-based public health, *Health Promotion International* 21(1), pp. 76–83, <https://doi.org/10.1093/heapro/dai025>.



CONTACT DETAILS

Heidi Muurinen

Finnish Institute for Health and Welfare

heidi.muurinen@thl.fi



<https://www.thcspartnership.eu/>



https://twitter.com/THCS_HEU



<https://www.linkedin.com/in/thcs/>



Co-funded by the
European Union

Funded by the European Union under the Horizon Europe Framework Programme - Grant Agreement N°: 101095654. Views and opinions expressed are however those of the author(s) only and do not necessarily reflect those of the European Union or European Health and Digital Executive Agency (HADEA). Neither the European Union nor the granting authority can be held responsible for them.



TRANSFORMING HEALTH
AND CARE SYSTEMS

THCS supports the transfer and implementation of health and care solutions across systems

How to use the Knowledge Hub for this?

Hanne Savolainen

Finnish Institute for Health and Welfare

Funded by the European Union under the Horizon Europe Framework Programme - Grant Agreement N°: 101095654. Views and opinions expressed are however those of the author(s) only and do not necessarily reflect those of the European Union or European Health and Digital Executive Agency (HADEA). Neither the European Union nor the granting authority can be held responsible for them.



Co-funded by the
European Union

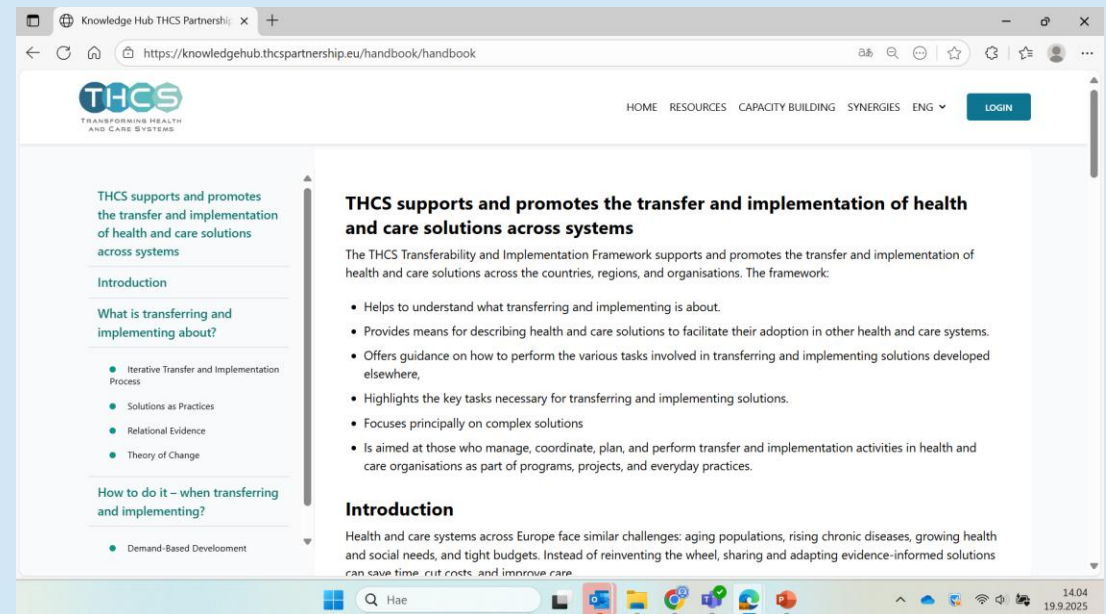
How to Use the Knowledge Hub - **Support for Transfer and Implementation**

- The Knowledge Hub's section about **Support for Transfer and Implementation** is designed to help you transfer, adapt, and implement health and care solutions in your own context.
- It offers three main types of resources:
 - Handbook – step-by-step guidance
 - Solutions – examples to explore, adopt, or share
 - Tools – methods and templates to support your work



The Handbook

- Open the online handbook to learn the process of transferring and implementing solutions.
- Use the handbook as your main guide when planning your own implementation.
- The handbook includes: Explanations, figures, links and examples of how solutions have been implemented elsewhere
- From the handbook, you also have access to forms, templates, and videos

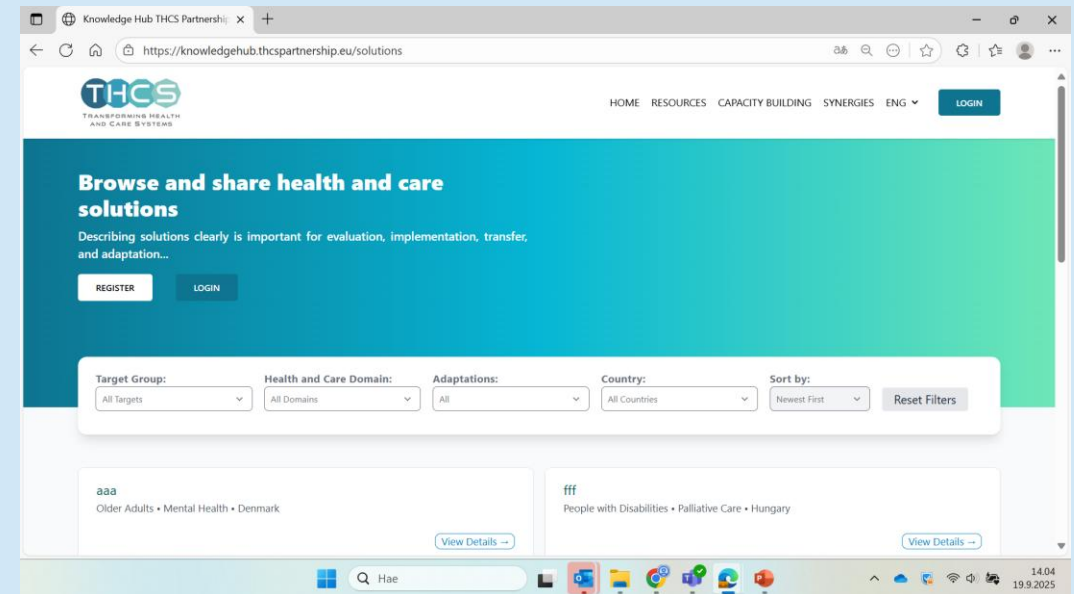


Browse and share solutions!

Browse and adopt solutions created by others.

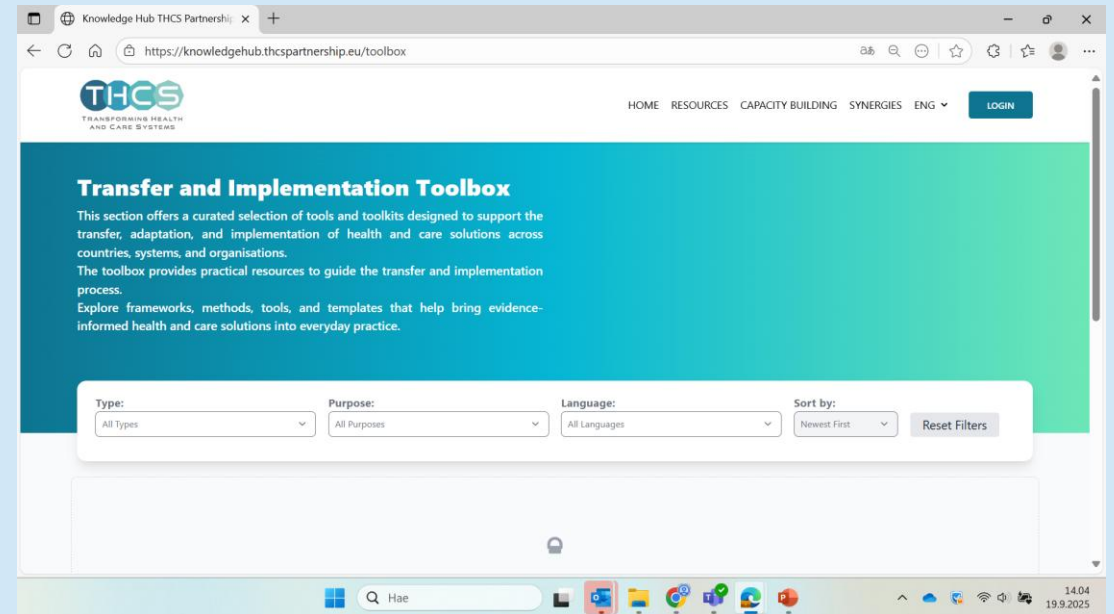
Share your own solution by completing the online form.

Report your implementation and results so they become part of the shared knowledge base.



Tools

- Visit the Tools section to access practical resources such as:
 - Frameworks and methods for designing, adapting, and scaling solutions
 - Templates for feasibility or transferability assessments
 - Checklists and evaluation forms
 - External links for deeper learning
- You can download PDFs, fill them in, and use them to support your planning and evaluation.
- The toolbox helps you turn ideas into tested and transferable practices.



Do you have tools to be added?

- If you have come across tools that are designed to support the transfer, adaptation, and implementation of health and care solutions across countries, systems, and organisations, please let us know!
- You can either
 - Write the tool details (and a link) in the chat now
 - Send email to heidi.muurinen@thl.fi



Practical Tips

- Use filters (e.g. by target population, health domain, country) to find relevant solutions quickly.
- Look for examples and case studies before starting your own project.
- Download and print key resources when you need offline support.
- Stay updated by revisiting the Hub for new tools and solutions.



Conclusion

1. Learn from the handbook.
2. Explore and adopt solutions.
3. Use tools to support your process.
4. Share your own work to help others.



CONTACT DETAILS

Hanne Savolainen

Finnish Institute for Health and Welfare

hanne.savolainen@thl.fi



<https://www.thcspartnership.eu/>



https://twitter.com/THCS_HEU



<https://www.linkedin.com/in/thcs/>



Co-funded by the
European Union

Funded by the European Union under the Horizon Europe Framework Programme - Grant Agreement N°: 101095654. Views and opinions expressed are however those of the author(s) only and do not necessarily reflect those of the European Union or European Health and Digital Executive Agency (HADEA). Neither the European Union nor the granting authority can be held responsible for them.